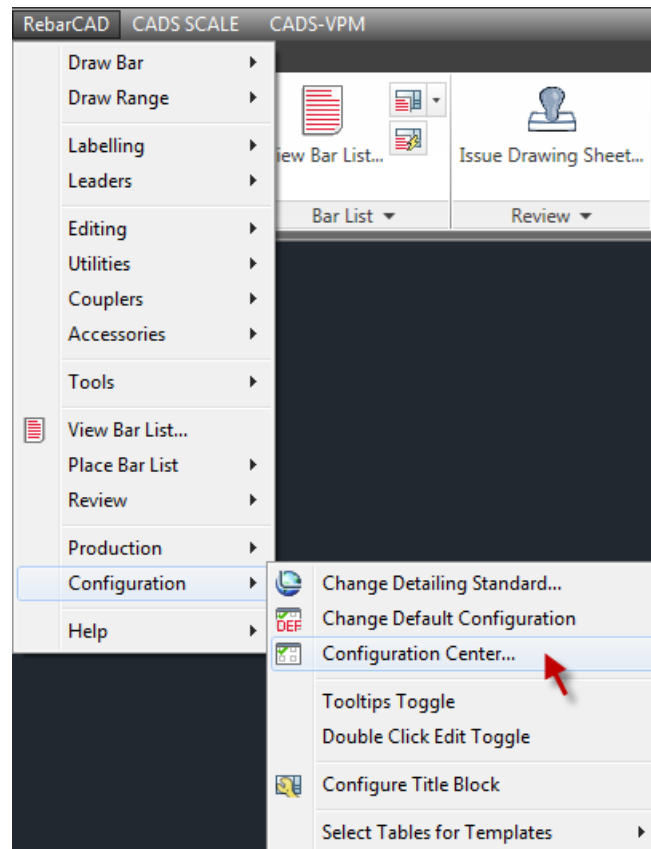


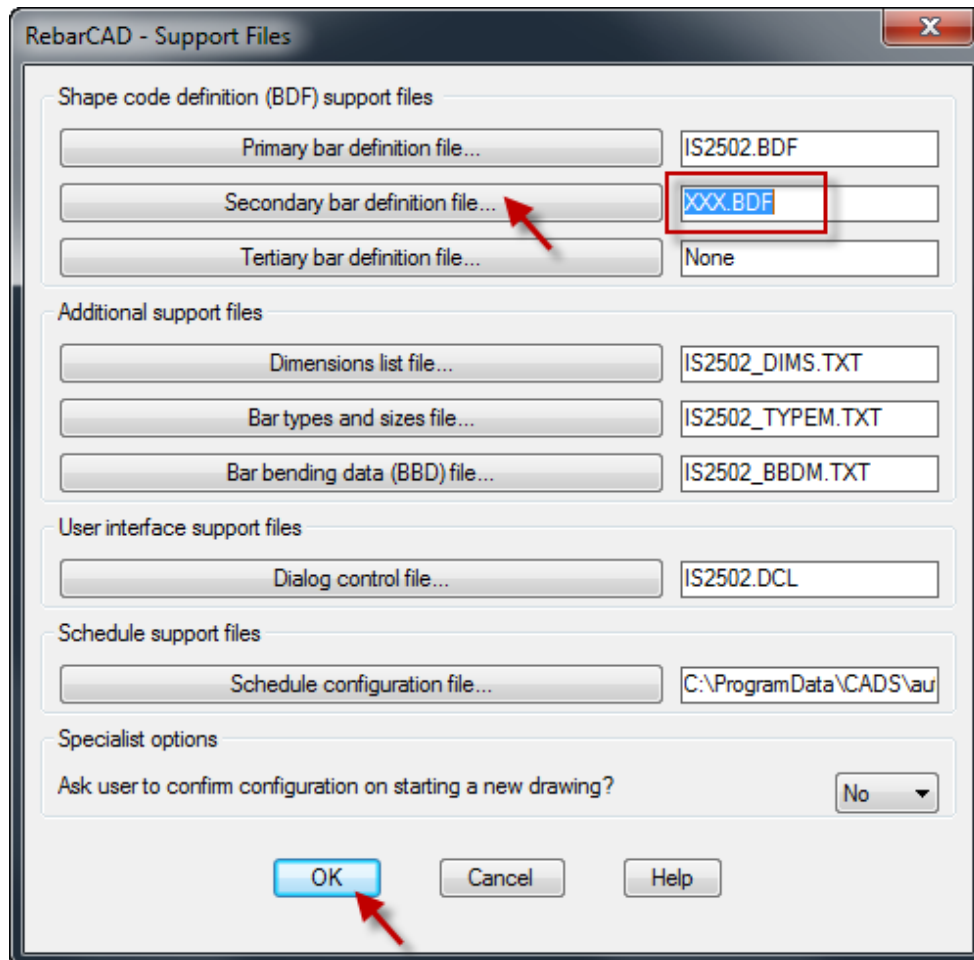
Support team India

To configure a BDF file

1. Save the customized BDF file to a desired location preferably the **params** folder.
2. Go to **RebarCAD > Configuration Centre > Support Files**



3. Click on the **Secondary Bar Definition file** and choose the customized BDF from the location saved. Click **OK** to close the dialog box.



The shapes added to the customised BDF file will now be listed along with the standard shapes in the Draw Bar Dialogue.